

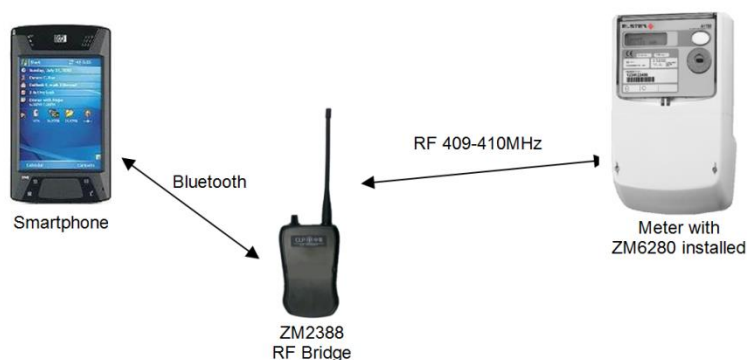


ZM2388 RF bridge

RF BRIDGE

A BATTERY POWERED RF BRIDGE TO LINK THE BLUETOOTH NETWORK AND UHF RF NETWORK FOR ON-SITE METER READING COLLECTION

The RF MIU operates in license free spectrum at UHF RF band to allow wider communication coverage than that of Bluetooth, where the RF communication distance is up to 400m compared to 10m of Bluetooth Class II that smartphones equip with. It enhances the accessibility in meter reading and to reduce the potential risk if the meter is installed in hazard area such as dog-bite site. However, most PDA are enabled with Bluetooth only without facilities to accommodate RF module, an RF Communication Bridge ZM2388 is designed to bridge the communication between smartphone and RF MIU by switching Bluetooth spectrum to license free UHF RF band. It is working with Zodicom ZM6280. Figure 1 shows the operating principle of the RF Communication Bridge.



Key Features

- Bluetooth Specification V1.2 Compliant
- Bluetooth Class 1 Radio
- Software Selectable license free UHF bands for most of the countries
- LED indication for status of RF connection with meter
- Fully transparent to meter protocol
- Selectable data transmission baud rate
- Power supplied by four NimH AA size rechargeable batteries
- Detactable antenna. Standard and enhanced antenna are available to choose

Technical Data

Radio Specification – UHF band RF

Operation Frequency	: 409 – 410 MHz
Frequency Error	: < 2 kHz
Channel Spacing	: 12.5kHz (default) or 25kHz
Modulation	: GFSK
Output Power	: 27dBm (Max.)
Receiver Sensitivity	: -108 to -114 dBm
Data Rate	: 1200, 2400 and 9600 bps programmable
Antenna Available	: Standard 2dBi : Enhanced 3dBi
Standard Compliance	: EN 300 220
(For output power 20dbm or less)	: FCC CFR47 Part 15 : ARIB STD T-67 CE

Bluetooth Specification

Version	: 1.2
Frequency	: 2.4GHz – 2.4835GHz

Spread Spectrum	: FHSS
Output Power	: 20dBm (Max)
Receiver Sensitivity	: -77 to -84 dBm

Electrical Specification

Power Supply	: 4 x AA size NimH rechargeable battery
Standby Current	: 35 to 55 mA
Transmit Current	: 380 mA

Display

LED1	: Power
LED2	: Charging
LED3	: Receive Data
LED4	: Transmit Data
LED5	: Link
LED6	: Status

Mechanical

Dimensions	: 135.2 x 85.8 x 34.5 mm
Weight	: 268g
Ingress Protection	: 53
Resistance to Vibration	: 5 – 10 Hz @ Amplitude of 2mm

Environmental

Operating	: -20°C to +60°C
Storage	: -25°C to +85°C

Product Photos



Copyright © 2014 Zodicom Limited. All rights reserved.

